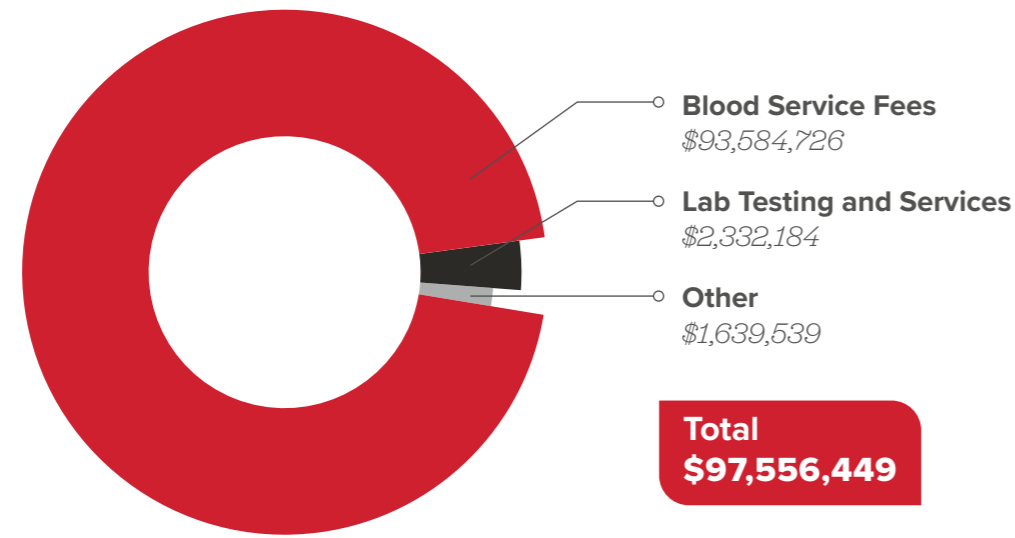
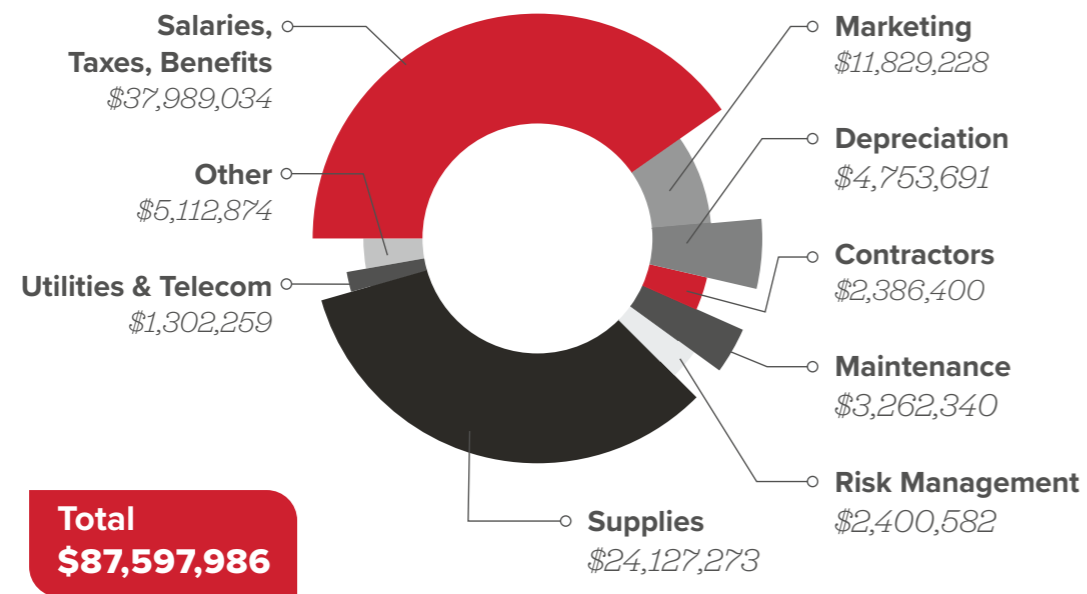


REVENUES



EXPENSES



STATEMENT OF FINANCIAL POSITION

	FY 2022	FY 2021
Current Assets	\$22,386,727	\$20,886,806
Net Property & Equipment	\$36,914,464	\$35,742,586
Other Assets	\$13,121,885	\$13,489,712
Total Assets	\$72,423,076	\$70,119,104
Current Liabilities	\$9,434,004	\$9,433,392
Long Term Liabilities	\$9,965,612	\$11,429,886
Total Liabilities	\$19,399,616	\$20,863,278
Net Assets	\$53,023,460	\$49,255,826
Total Liabilities & Net Assets	\$72,423,076	\$70,119,104

STATEMENT OF ACTIVITIES

	FY 2022	FY 2021
Revenues	\$97,556,449	\$98,990,903
Less Expenses	\$93,163,681	\$87,597,986
Income from Operations	\$4,392,768	\$11,392,917
Non-Operating Income (Expense)	\$(625,134)	\$1,302,216
Increase in Net Assets	\$3,767,634	\$12,695,133