



I WANT TO DONATE BLOOD.

Scan to make
an appointment!



I WANT TO HOST A DRIVE.

Scan here
to begin the process
to host a blood drive!



Share Life. Save Lives.
With Your Community Blood Center

DONATION HOURS

Mon-Fri 7:00 AM – 7:00 PM

Sat-Sun 7:00 AM – 5:00 PM

Some center hours may vary. Check website for changes.

CONTACT YOUR LOCAL CENTER

Greenville, SC	864.239.2937
Spartanburg, SC	864.641.6013
Easley, SC	864.644.0030
Greenwood, SC	864.227.8333
Lexington, SC	864.751.1168
Seneca, SC	864.882.8364
Charleston, SC	854.429.1700
Florence, SC	843.473.6288
Myrtle Beach	843.473.6270
Asheville, NC	828.585.8060
Hendersonville, NC	828.233.5301
Raleigh, NC	984.222.1101
Savannah, GA	912.777.1011

TO FIND A BLOOD DRIVE VISIT
thebloodconnection.org/donate



**THE BLOOD
CONNECTION**



TBC
**SICKLE CELL
AWARENESS**

About **Sickle Cell Disease** and
how you can make a difference.



**THE BLOOD
CONNECTION**

Your Community Blood Center



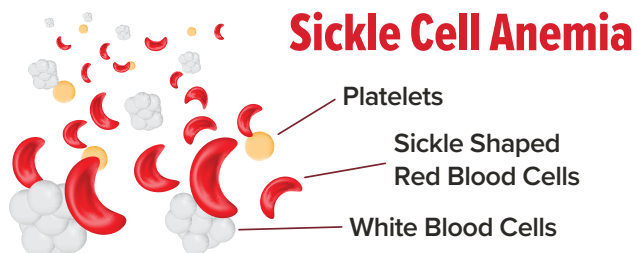
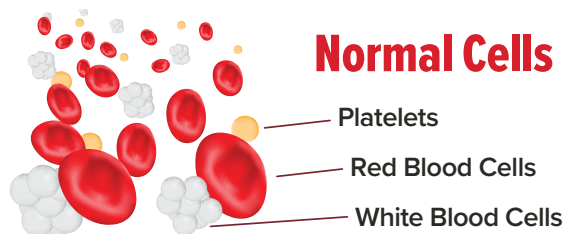
thebloodconnection.org

The Blood Connection is a non-profit organization. Blood can be donated every 56 days. Donors must be 16 years or older and over 110 lbs. to donate. Sixteen year olds are required to have written consent to donate blood. Before you donate blood, make sure that you drink plenty of water and eat a healthy meal. TBC Donor ID Card (preferred) or photo ID required to donate. Gift cards and other incentives are non-transferable.

WHAT IS IT?

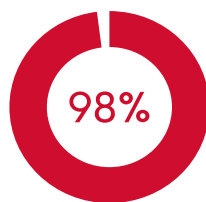
SICKLE CELL DISEASE

Sickle Cell is the most common inherited blood disease. It causes red blood cells to form abnormal crescent shapes. These sickled cells will bump against the blood vessels and cause intense pain for someone living with this disease.



As the number of sickled cells starts to outnumber the healthy red cells in a patient's body, blood transfusions are needed to replace the sickled cells with healthy red cells. Due to the lifespan of red cells, transfusions may be needed every couple of weeks.

WHO IS AFFECTED?



98% of people living with sickle cell disease are African American.



One in two African Americans are a match for donating blood to help sickle cell patients.



“

*I need 8 people to donate every 3 weeks in order for me to live. I think about the people who donated, **and I'm eternally grateful.***

Shontrell, Sickle Cell Survivor

HOW CAN I HELP?

DONATE BLOOD & ENCOURAGE YOUR FRIENDS

There are rare blood antigens that are specific to African Americans. Although it is desperately needed, surveys have found that less than 3% of African Americans donate blood. Because of that, it is hard to find compatible blood types for Sickle Cell patients, who usually require multiple blood transfusions. Having a close match lessens the chance of side effects from the treatment.

HOST A BLOOD DRIVE

If you're unable to donate, host a blood drive! TBC can help you host a drive from almost anywhere. To host, call **(864) 751-5003**.

TBC MYTHBUSTERS

MYTH:

"I have the sickle cell trait so I can't donate blood."

FACT:

"FALSE, even with the sickle cell trait, you can still donate blood."

If you are healthy and well at the time of donation.



**THE BLOOD
CONNECTION**

Your Community Blood Center

thebloodconnection.org/donate