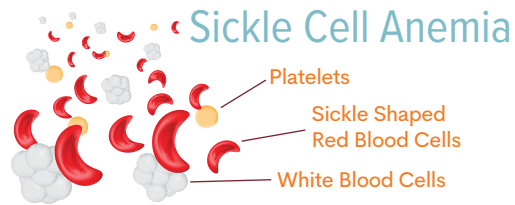
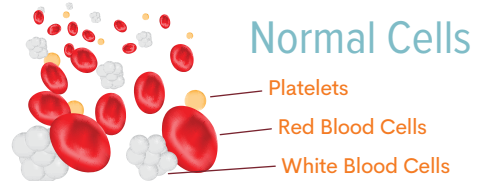


I AM
BECAUSE
WE
ARE



Sickle Cell Disease WHAT IS IT?

Sickle Cell is the most common inherited blood disease. It causes red blood cells to form abnormal crescent shapes. These sickled cells will bump against the blood vessels and cause intense pain.



As the number of sickled cells start to outnumber the healthy red cells in a patient's body, blood transfusions are needed to replace the sickled cells with healthy red cells. Due to the lifespan of red cells, transfusions may be needed every couple of weeks or months.

Sickle Cell Disease WHO HAS IT?

98%

ARE AFRICAN AMERICAN

1 IN 2

AFRICAN AMERICAN'S ARE A MATCH
FOR DONATING BLOOD

Sickle Cell is the
ONLY
chronic illness where life
expectancy is going down.



Sickle Cell Disease WHERE DO I COME IN?

DONATE BLOOD OR HOST A BLOOD DRIVE

There are some rare blood antigens that are rare to African Americans, and it is hard to find compatible blood types for some Sickle Cell patients. Because they require multiple blood transfusions the blood they receive must be very closely matched to prevent reactions. The **best match** is blood that comes from another African American donor.

We are all bound together in ways that are *invisible* to the eye; there is a

ONENESS
to humanity; that we achieve ourselves by sharing ourselves with others, and caring for those around us.



A PERSON IS A PERSON THROUGH OTHER PERSONS

EVEN WITH THE
SICKLE CELL TRAIT,
YOU CAN STILL
DONATE!



SHARE LIFE



**THE BLOOD
CONNECTION**
Your Community Blood Center

#sicklecellconnection

Donor Eligibility

- Photo ID required (*all personal information is confidential*)
- Must be 17 yrs old
- Weigh at least 110lbs